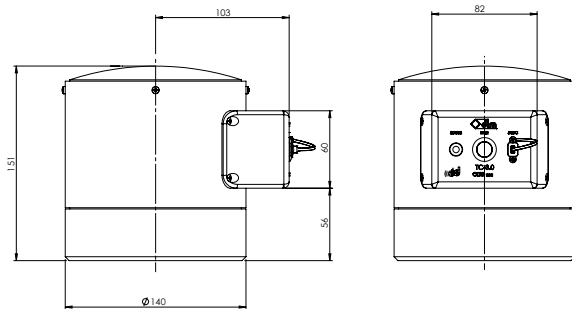
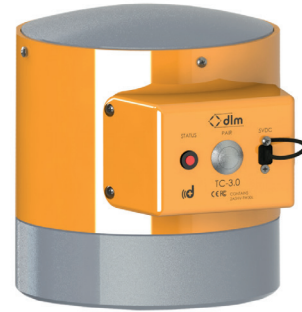




Large Telemetry Compressive Load Cell TCLG-3.0

DLM's Telemetry Compressive Load Cells can be used independently or in combination as part of weighing platforms. They range from 10t to 300t and manufactured using high grade stainless steel, making these load cells particularly suited to rugged environments and the hire industry. Bespoke sized compressive load cells can be designed upon request.



Applications:

- Tank weighing
- Hydraulic lifting operations
- Vessel weighing
- Certification

Features:

- 2.4GHz licence free frequency
- Ability to transmit to 12 handheld displays
- 800m wireless range
- Remote power on/off
- Sleep mode for battery conservation
- Use the TW-3.0 Handheld to totalise load readings from multiple compressive load cells

Load Capacity (Tonnes)	Description	Part Number	Accuracy %FRO	Proof Test % Load Capacity	Weight (kg)	Resolution (kg)
100	Dome	0001-1372	<±0.5	150	14	100
150	Dome	0001-1373	<±0.5	150	14	100
200	Dome	0001-1374	<±0.5	150	14	100
300	Dome	0001-1375	<±0.5	150	14	100

Specification:

Battery	1 x 3.7V Li-Po rechargeable
Battery Life:	700 hours continuous (2 years non-operational)
Charger	Supplied with USB charger
Operating Temperature	-20°C to +60°C
Handheld Display	One or more TW-3.0 display
Frequency	2.4GHz
Range	Up to 800m line of sight
Loadcell Material	Stainless steel
Bridge Resistance	700Ω
Saddle Options	Dome saddle
Calibration	TW-3.0-T and d+ enabled displays
Packaging	Packaged in rugged storm/peli watertight case.
Compatible With	Wireless hand held display / Custom built display / Centre of gravity display
Optional extras	100-300t load saddle. Part number 0001-1227
Approvals	FCC Tested and compliant and CE Marked