

Silo Load Cell SI-1.0

The Silo Load Cell from DLM offers a complete vessel weighing solution incorporating lift off prevention and vessel expansion without compromising accuracy.

It features a fully welded sensor and is manufactured from high tensile stainless steel type 17-4-PH for endurance durability and corrosion resistance.

The sensor becomes an integral part of your assembly and eliminates the need for vessel restraints or check rods.

We can also offer customised designs suited to your exact specification as well as a selection of optional accessories including stainless steel brackets and a range of instrumentation.

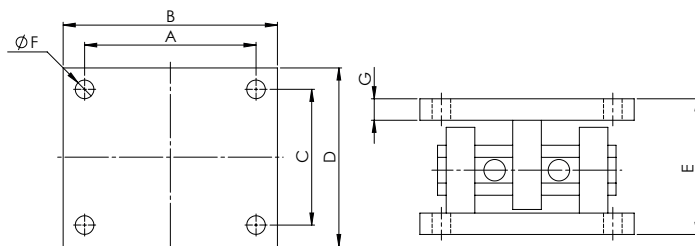
Silo Systems: Silo Load Cells can be supplied with full load monitoring systems including panel meter/HMI displays, ticket printers, digital and analogue retransmissions. Systems can be designed to meet clients exacting specifications, please contact us to discuss your full requirements.



Vessel Weighing Assembly:

- Low cost installation
- Five sizes
- Stainless Steel Load Cell
- Sealed to IP68
- High accuracy
- High resistance to off axis loads
- Allows vessel expansion/contraction
- Integral lift off prevention

Dimensional Data



Type	Part Number	Capacity	A	B	C	D	E	ØF	NO.F	G	Min Expansion
Size1	0001 - 1087	1 – 5t	105	150	94	124	88	13	8	12.7	3mm
Size2	0001 - 1088	2 – 20t	140	200	125	165	117	18	8	18	4mm
Size3	0001 - 1089	10 – 50t	175	280	175	230	162	22	8	25	6mm
Size4	0001 - 1090	75t	240	300	190	250	184	26	12	25	6mm
Size5	0001 - 1091	100t	250	320	230	300	210	26	12	30	8mm

Specification

Capacities:	0.5t, 1t, 2t, 5t, 7.5t, 10t, 20t, 30t, 50t, 75t, 100t
Full Load Output:	2.0 mV/V
Zero Load Output:	10V (15V)
Accuracy (combined error):	<0.05%
Repeatability:	<0.01%
Input Resistance:	750Ω (+/-20)
Output Resistance:	700Ω (+/-2)
Compensated Temp. Range:	-10 to +50°C
Operating Temp. Range	-25 to +70°C
Temp. Coefficient on Zero:	<0.005% Capacity/°C
Temp Coefficient of Span:	<0.003 Capacity/°C
Safe Overload:	150% of SWL
Insulation:	>500MΩ@100Vdc
Environmental Protection:	IP68



Available in following finishes for the mounting bracket:

- Standard - Zinc Phosphate & Black E-Coat with powder coated Yellow.
- Any Ral colour to be powder coated over the standard finish in replace Yellow.